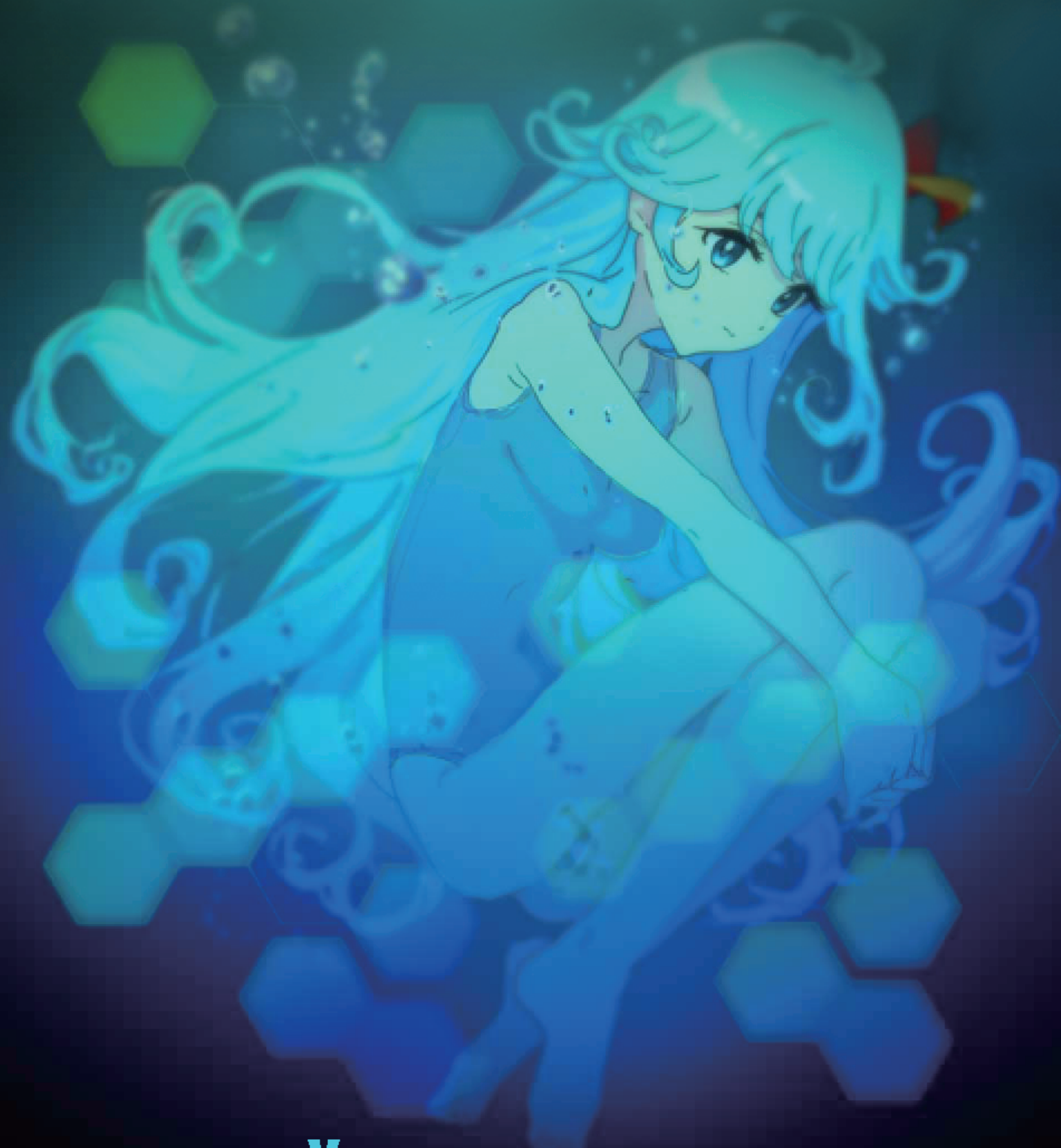


ABYSS CRAWLERS PLUS



Yaneura games

Method of operation

DungeonEscape(Longhold) Dash(skill)

Xbox type Joypad

↑
←Move→
↓

Status& Pause

Bomb

Gun

Sword

Jump

Esc
Status& Pause

Shift
Escape
(Longhold)

Z
Dash
(skill)

X
Gun

C
Sword

V
Bomb

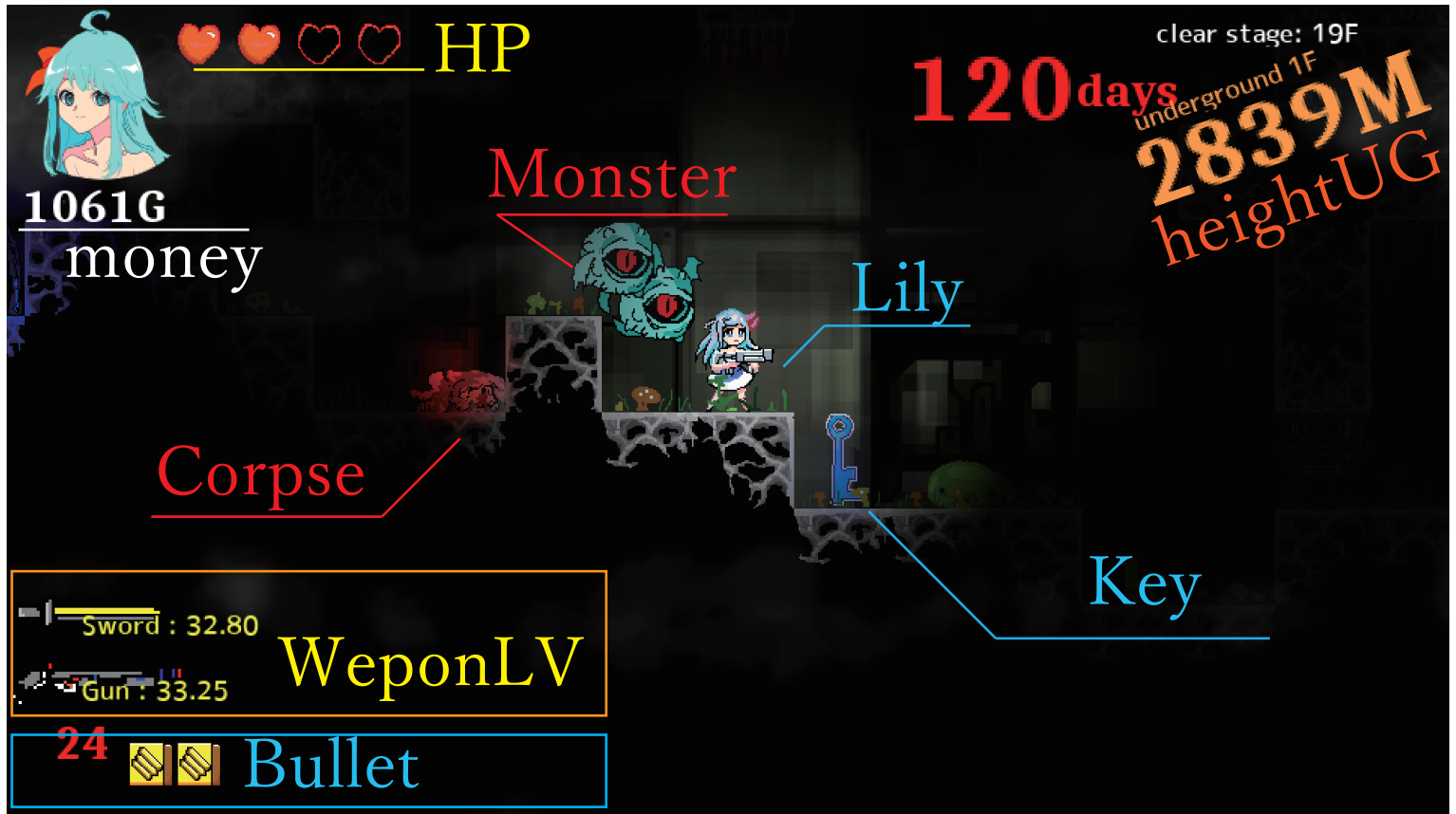
Space jump

↑

←↓→
Move

How to play

You head towards the dungeon and look for the key and aim for the upper floor.



Abyss crawler is a very difficult game.

Players have to die many times.

Please return to town before you die and increase your skills in the town.

Please press and long hold LeftShift or LeftSholder to return to the city from the dungeon.

Please use the skill shop for Powerup.

Let' s go to the Thch room & the Beginner room.

If you think it is difficult, make money in the previous level



Player
Lily

A clone girl made by Dr
She heads to a dangerous
dungeon for the people.

Dr.Ameno



They will help you within the dungeon.

Gun
LV +1



BlackSmith

katana
LV+1



BladeMeister

Bullets
+6



Dealer

Heal
+1



Recover

Title: AbyssCrawlersPlus
Developer: Yaneuragames
Program&Pixel Art: YaneG
CharacterArt: OishiiGohan
SuperAdviser: nao
Sound: H/MIX GALLERY
Translation: Miyuki Takahashi
SpecialThanks: CedSharp



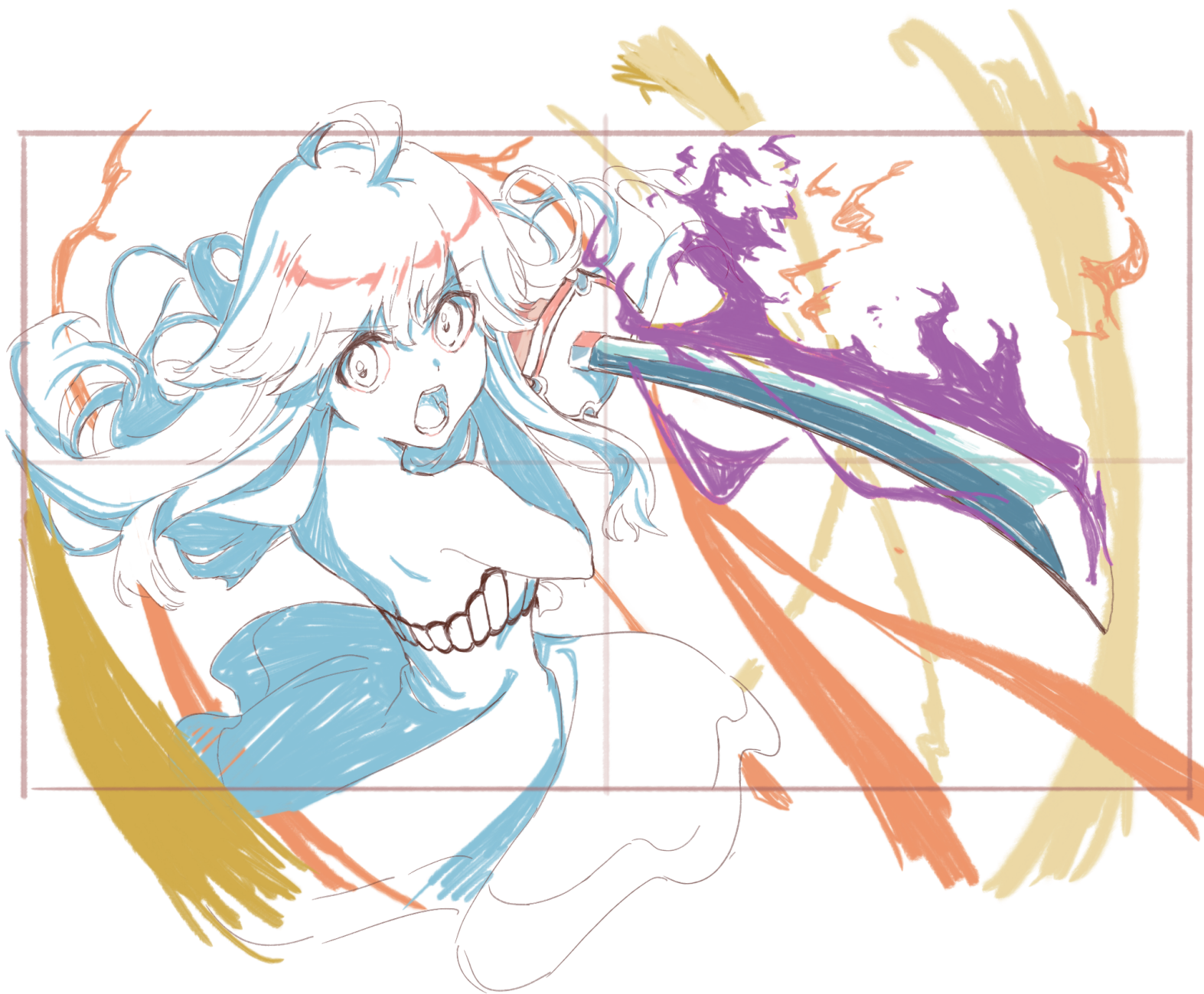
character reference

Drawing by OishiGohan

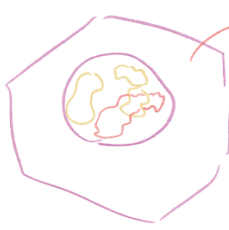
④



②画面上のサイズ
小さいので
もう少しザックリでもよいかも
しません。
お任せます〇〇



Thank you for playing



泡は
影の上に
ハイライトを
重ねる感じで👉

■ ハイライト
■ サテ

● X印のところ
スキマです👉

①

