



VALFARIS™

Mecha Therion

INSTRUCTION BOOKLET

THERION'S STORY CONTINUES...

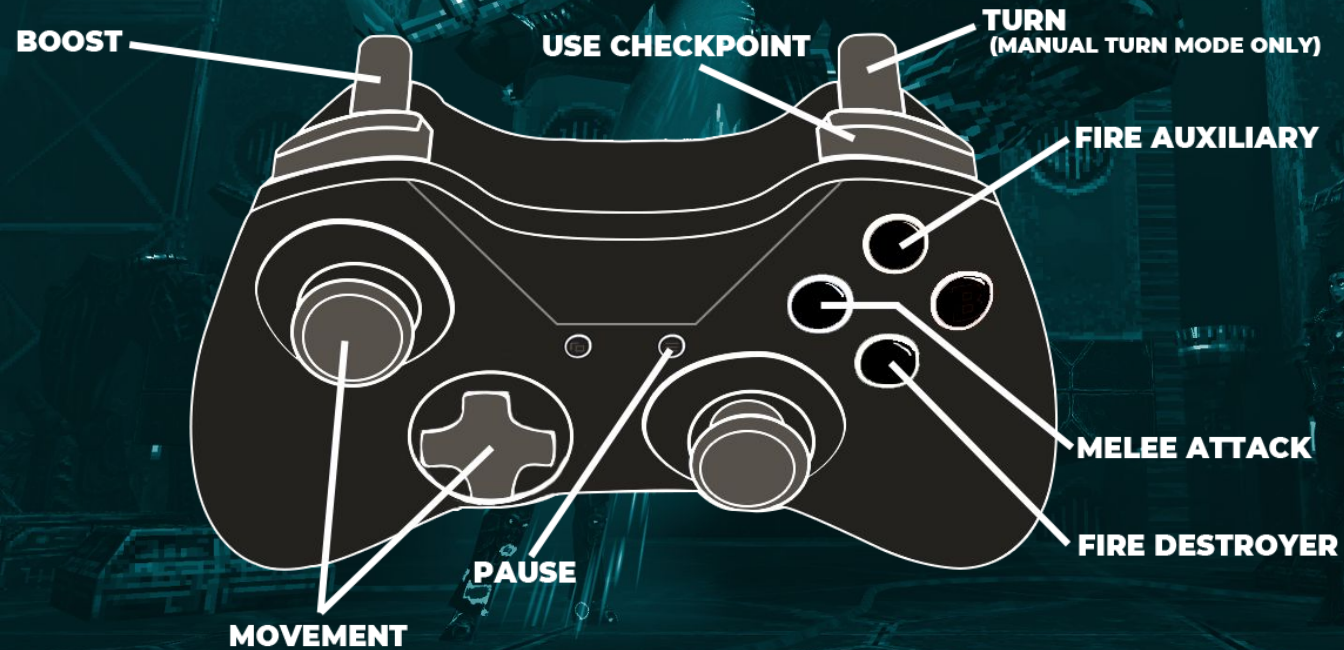
In his pursuit of the evil Lord Vroll, Therion has travelled to the edge of the edge, where the unholy flourish, and the sadistic revel in demonic pleasures.

His thirst for retribution unsated, Therion wields a new weapon, a behemoth suit forged of metal. Encased within its giant frame, he becomes the machine's beating heart and its vengeful rage.

SUIT-UP AND UNLEASH MECHA HELL!



CONTROLLER



KEYBOARD

	MOVE RIGHT
	MOVE LEFT
	MOVE UP
	MOVE DOWN
	FIRE DESTROYER
	MELEE ATTACK
	FIRE AUXILIARY
	USE CHECKPOINT
	BOOST

CHOOSE YOUR DIFFICULTY



Mortal

Start with x4 health. Enemies are less aggressive than Demigod difficulty.



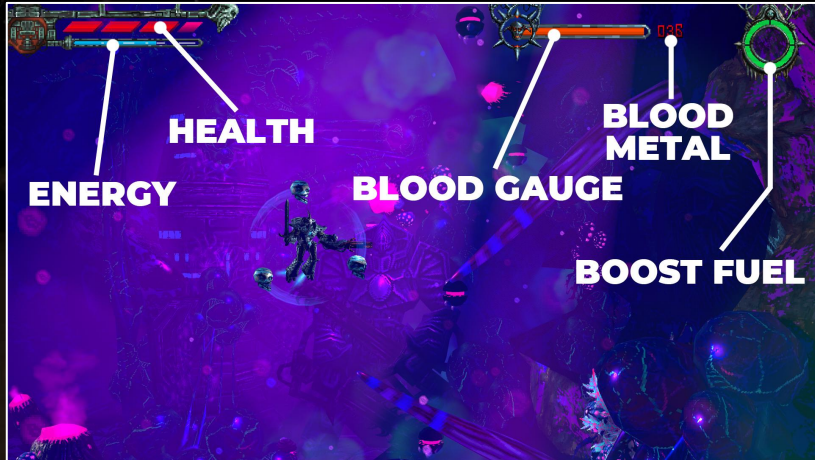
Demigod

Start with x3 health. Enemies are more aggressive than Mortal difficulty.



Great Horned One

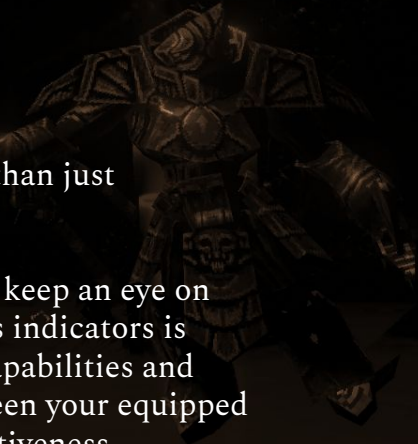
Start with x2 health. Enemies are more aggressive than Demigod difficulty.



THE GAME SCREEN

There's more to piloting the mecha than just mindlessly blasting enemies.

If you want to survive, you'll need to keep an eye on the HUD. Being aware of the various indicators is fundamental to utilising the suit's capabilities and mastering the art of switching between your equipped weapons for maximum combat effectiveness.



WEAPON CLASSES

DESTROYER

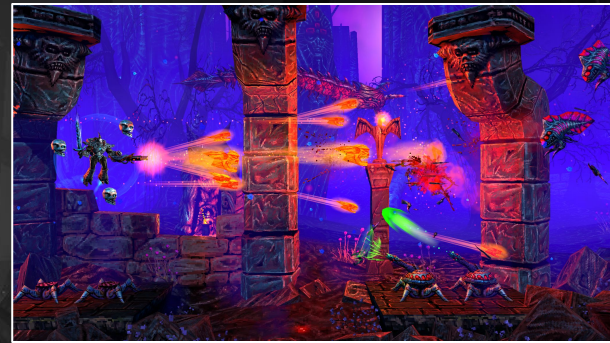
This class of weapon is the mecha suit's primary armament. There are a total of six different Destroyers available, although you only start with the Hellwraith – a powerful minigun that fires tormented souls. Using the equipped Destroyer at maximum firepower uses suit energy. If energy is completely depleted, the Destroyer's firepower is greatly reduced.

MELEE

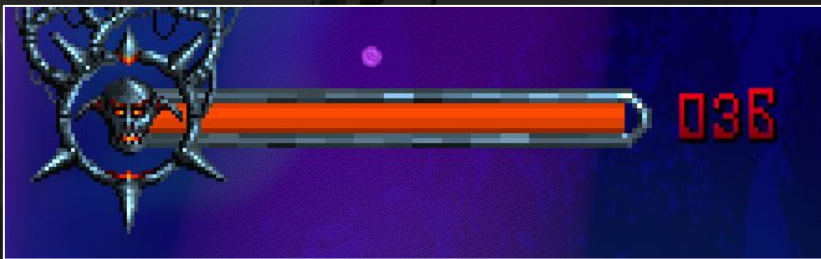
Formidable close-quarters weapons, although the suit's blade serves a greater purpose than merely slicing through enemies. It can also be used against projectiles, debris, and parts of the environment. Using the Melee weapon yields energy, which is absorbed into the suit and converted into firepower for the Destroyer and Auxiliary weapons.

AUXILIARY

Supporting the suit's Destroyer and Melee weapons, the additional offensive options provided by Auxiliary attachments shouldn't be overlooked. As with Destroyers, using Auxiliary weapons depletes the suit's energy. Initially, the suit is equipped with Blade Tempest, which fires a barrage of homing blades that can eliminate multiple targets.



BLOOD METAL | BLOOD OF VALFARIS



BLOOD METAL

The currency used to upgrade the suit's weapons. Blood Metal is acquired every time the Blood Gauge is filled, which is achieved in a number of ways, such as killing enemies and destroying projectiles. The Blood Gauge fills faster if you successfully destroy a complete wave of enemies. Filling the Blood Gauge also increases the threat level, and when the gauge flashes red there's a high probability a Champion enemy will appear.



BLOOD OF VALFARIS

Items required to upgrade weapons to their highest levels. They can also be used to farm Blood Metal. When docked at a checkpoint, select 'Blood Shatter'. For every x1 Blood of Valfaris shattered, you receive x10 Blood Metal in return.

Blood of Valfaris are rare and usually located in secret areas, although there is a certain type of enemy that yields Blood of Valfaris when killed. You'll have to find them first, though!

MODULES | HYPERCORE

MODULES

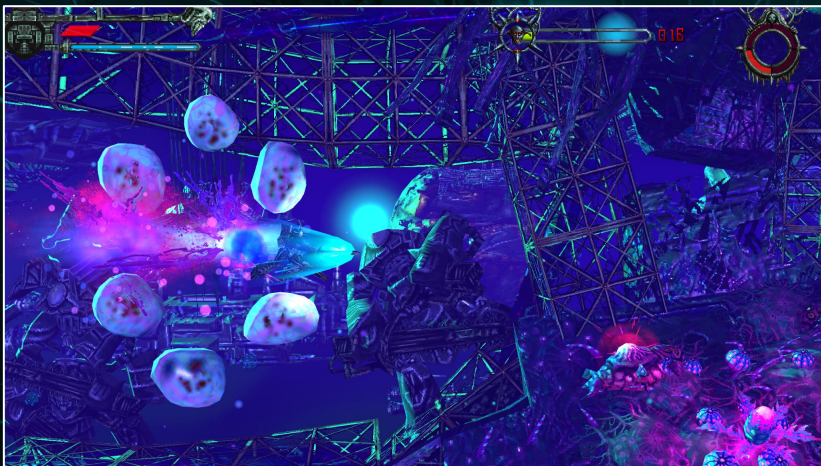
Utility add-ons that upgrade the suit's capabilities. For example, if you boost into a solid object with the Crash-Burst Module equipped, the suit unleashes a damaging shockwave. The mecha suit can be upgraded with a maximum of three Module slots.



HYPERCORE

A powerful energy source that augments a Destroyer weapon's effectiveness when it's equipped. For example, with the Hypercore fitted, the Hellwraith is enhanced with up to three skulls which orbit the suit and provide extra firepower.

BOOSTING | CHECKPOINTS



BOOSTING

A valuable mobility feature that requires Boost Fuel and gives the suit a temporary surge of forward thrust. When active, the suit is impervious to damage, so you can boost to break through parts of the environment or burst through a wave of enemies without losing health.

Boosting into enemies activates the suit's Critical Strike – a powerful blow from the Melee weapon that deals a large amount of damage. Boost Fuel automatically replenishes over time.



CHECKPOINTS

If the suit's health becomes fully depleted, you'll respawn at the most recently activated checkpoint. To activate a checkpoint, simply fly over it. Activating a checkpoint auto-fills the suit's health, energy, and boost fuel. Docking at a checkpoint allows you to adjust the suit's weapon and module loadout, and also use Blood Metal to upgrade your weapons.

SCREENSHOTS



Mecha Therion locks blades with Lord Carnack in the Oceanic Wastelands



Used to drill and excavate metamorphic rock, the Jelly Queen's hyperpulse lasers pack a real punch

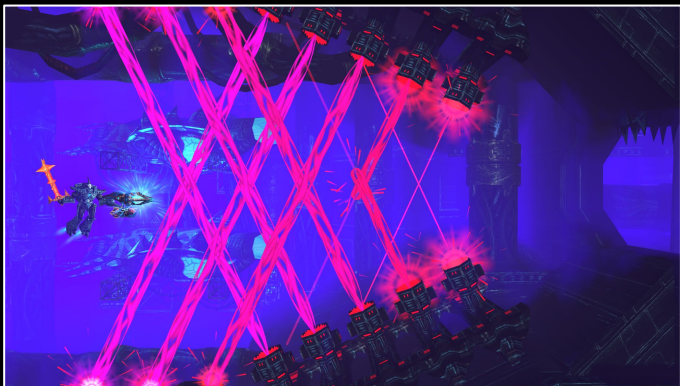


Predatory patriarch King Vykhm commands his gelatinous army of jellies using telepathy



Defeat the Living Core to obtain Therion's Fist - a melee weapon infused with blood electricity

SCREENSHOTS



The resistance base defences consist of repurposed high-intensity industrial laser cutters



A scorched battleground, the Outer City is patrolled by giant walkers known as 'City Eaters'



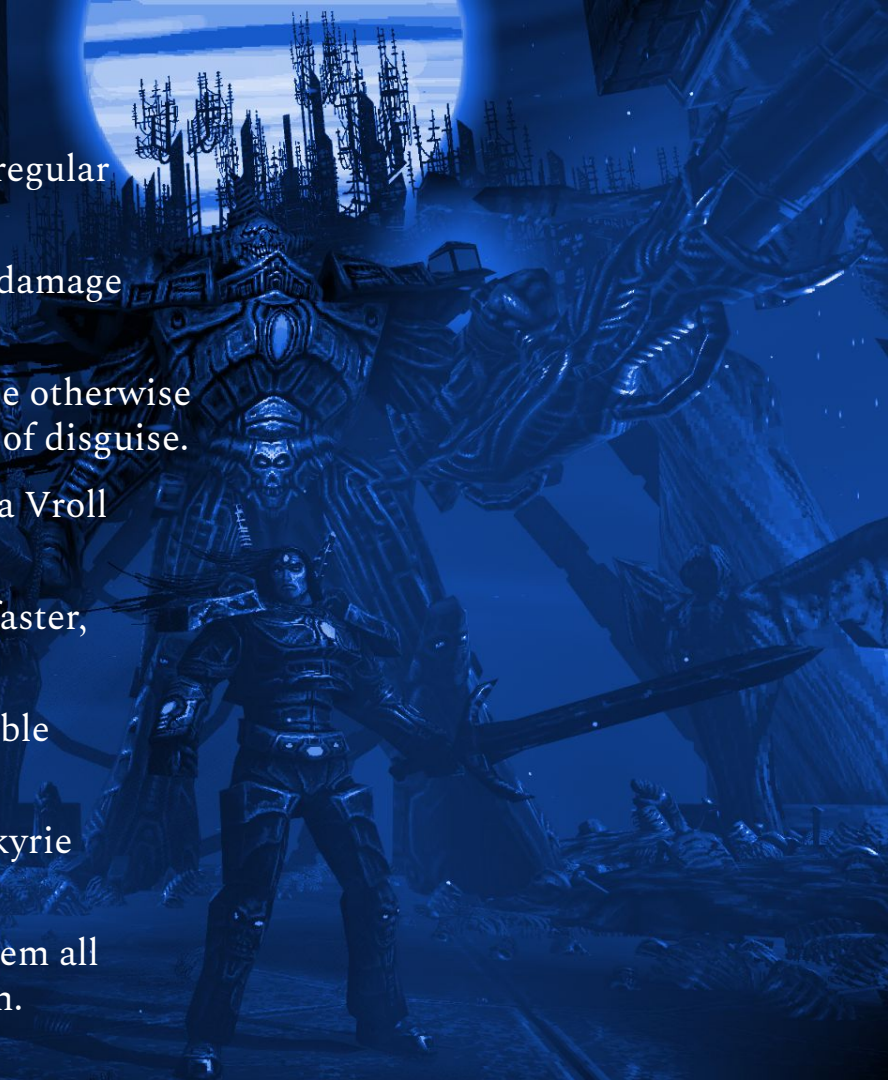
The immense crushing force of Garrex's pincers are capable of breaching Mecha Therion's armour



Seek out secret areas to find more Blood of Valfaris, new modules, and new weapons

HINTS & TIPS

- ❖ Performing a Critical Strike yields more energy than a regular melee attack.
- ❖ Some Modules have a synergy effect that increases the damage power of certain melee weapons.
- ❖ The red eyes of Spy Fleas give away the position of these otherwise invisible creatures. Hit the eyes to reveal these masters of disguise.
- ❖ Inflicting enough damage on the head and tail of Mecha Vroll yields pick-ups.
- ❖ Destroy every enemy in a wave to fill the Blood Gauge faster, giving you more Blood Metal to upgrade your weapons.
- ❖ Equip the 'All-Seeing Eye' Module if you're having trouble finding all the secret areas. It will show you the way!
- ❖ Depending on who you kill first in the Kalmah and Valkyrie fight, you are awarded one of two different Modules.
- ❖ There are three hidden weapon parts to find. Collect them all and you'll be able to construct a powerful secret weapon.



THANKS FOR PLAYING!

If you enjoyed Valfaris: Mecha Therion, why not try these other games from developer Steel Mantis...



SLAIN: BACK FROM HELL

A hack-and-slash platformer forged from heavy metal. Take the role of a doomed hero and wielder of the legendary sword, Bathoryn. Use melee and magic attacks as you traverse six cursed realms, each ruled by a deadly overlord, before confronting the evil Lord Vroll.



VALFARIS

A heavy metal infused 2D action-platformer set in a far corner of space. Returning to his home of Valfaris, Therion finds the once grandiose citadel the host of an ever-growing darkness. Brutal combat. Deadly enemies. Stunning pixel art. Savage soundtrack. Get ready to rip the galaxy a new wormhole.

Slain: Back From Hell and Valfaris are available for PC and PlayStation, Switch, and Xbox consoles.