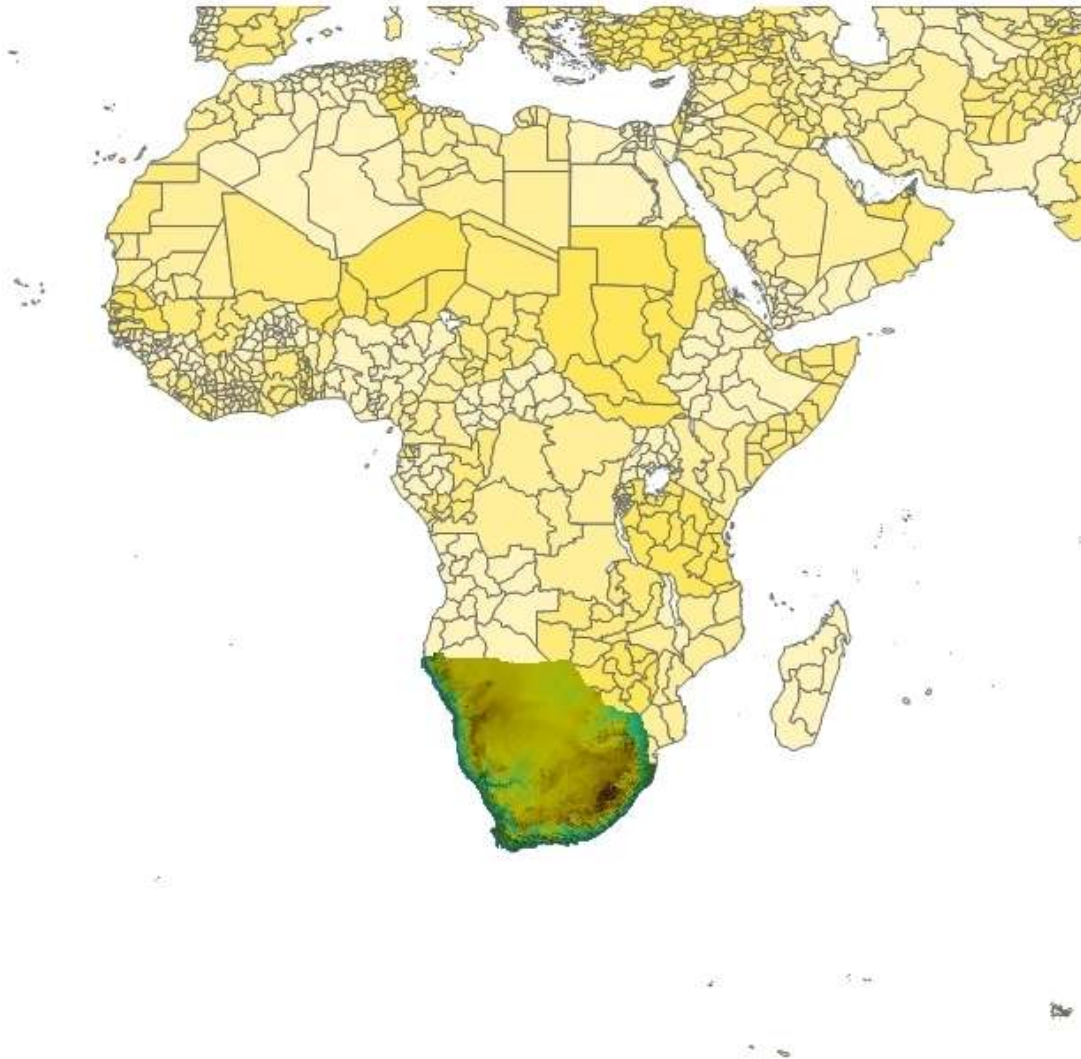


toposim

SOUTH AFRICA



Contents

Installation	3
Support	4
File Contents	5
Coverage images	6
South Africa	6
South Africa	7
Botswana	8
Namibia.....	9

Installation

Installation is handled by Steam after purchase of the product. After purchasing the product the files will be downloaded and installation into the Scenery Library will be automatic.

You can check that the scenery has been installed by:

- Launching FSX:SE and clicking Settings.
- Then click on Scenery Library.
- Toposim South Africa should be visible at the top of the scenery list.
- If you do not see the scenery entry, please contact support.

Support

Questions, comments, and problems should be posted in the appropriate forum under the Support & Community tab.

Justin

support@toposim.net

<http://www.toposim.net>

For support specifically on the Steam version of Toposim add-ons please contact Dovetail Games.

<https://dovetailgames.kayako.com/>

Thank you for your purchase.

File Contents

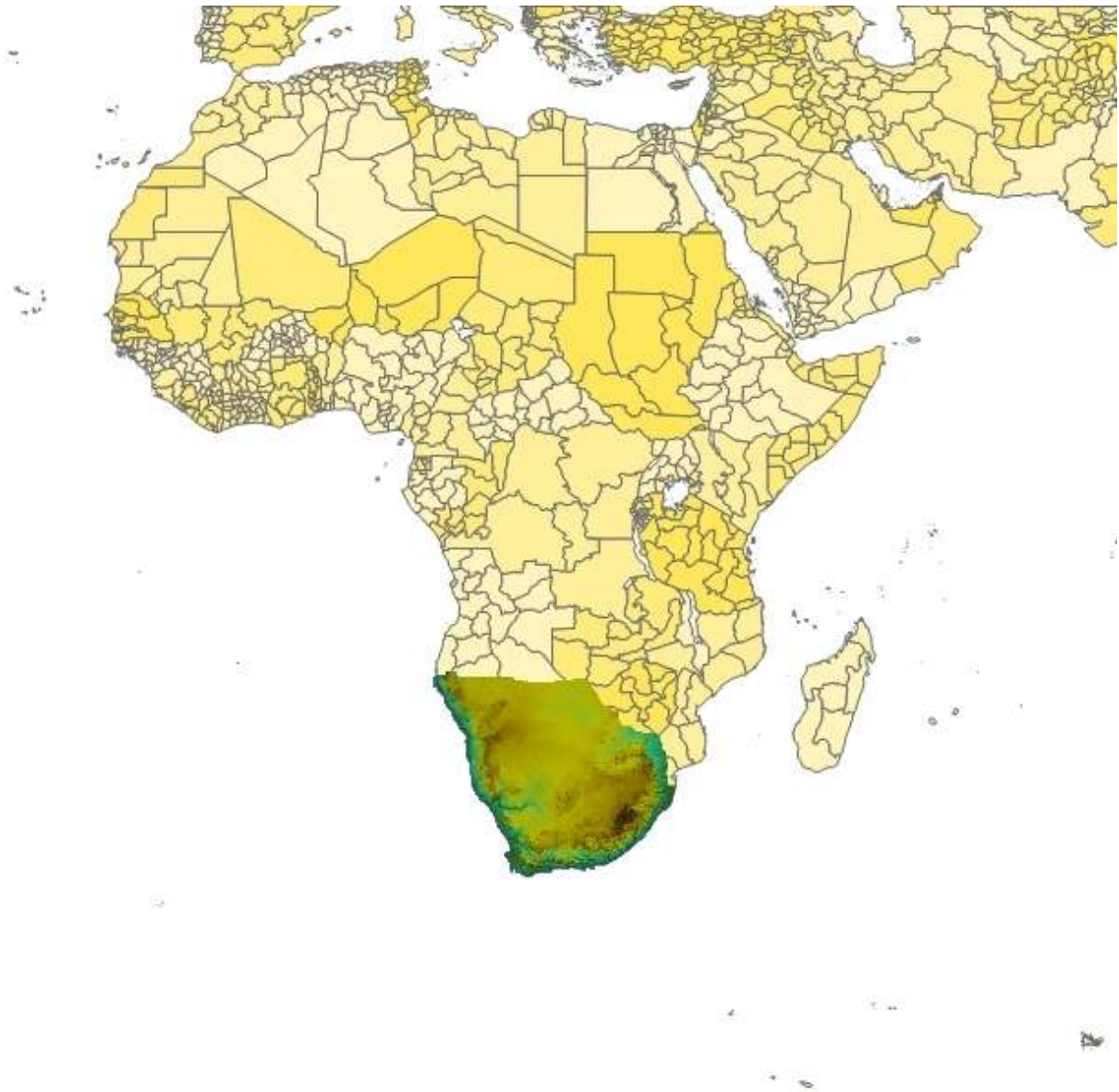
TOPOSIM/CONTINENTS/SouthAfrica/scenery/TOPOSIM_DEM_SouthAfrica_SouthAfrica_LOD7-11.bgl

TOPOSIM/CONTINENTS/SouthAfrica/scenery/TOPOSIM_DEM_SouthAfrica_Botswana_LOD7-11.bgl

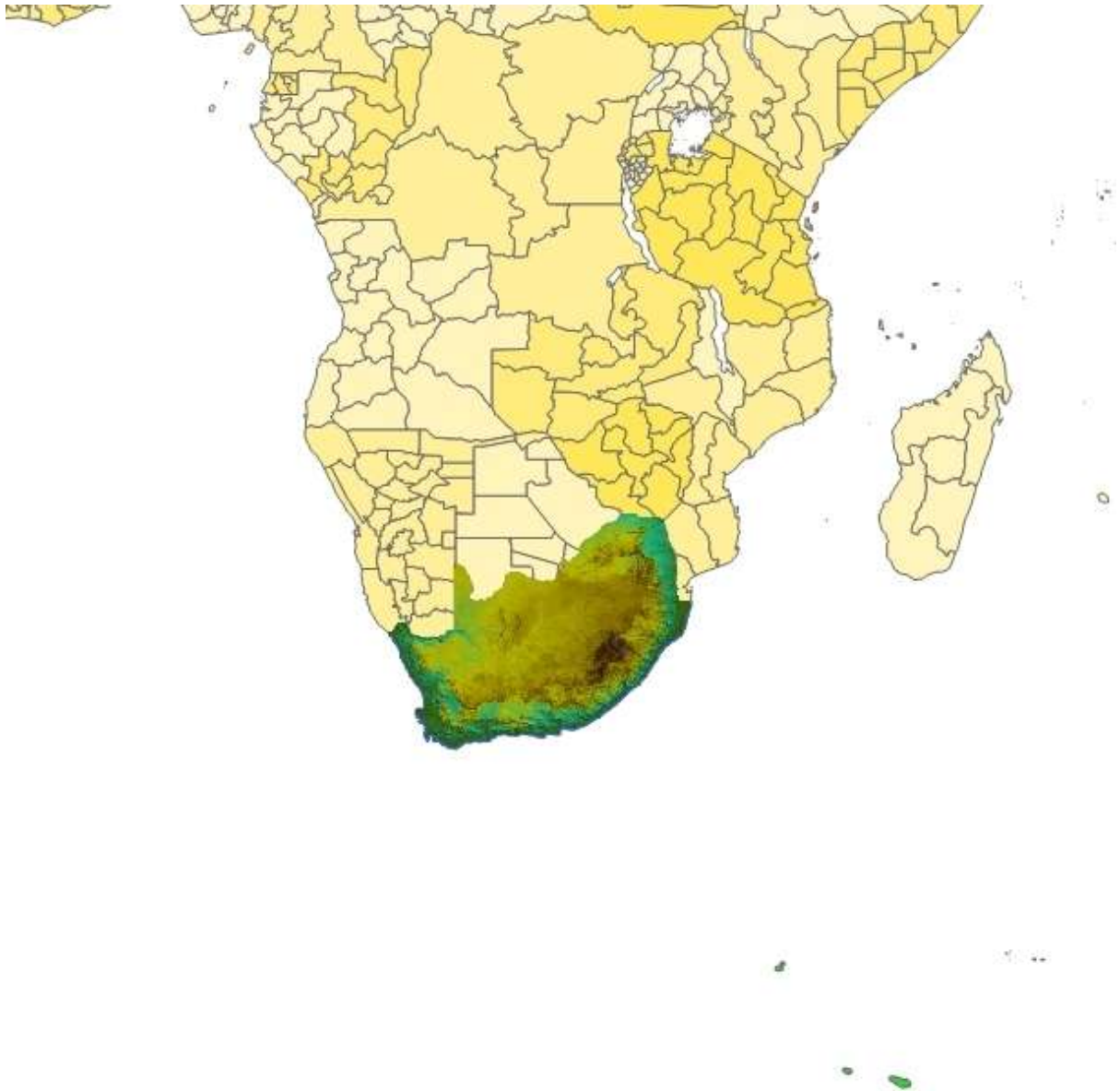
TOPOSIM/CONTINENTS/SouthAfrica/scenery/TOPOSIM_DEM_SouthAfrica_Namibia_LOD7-11.bgl

Coverage images

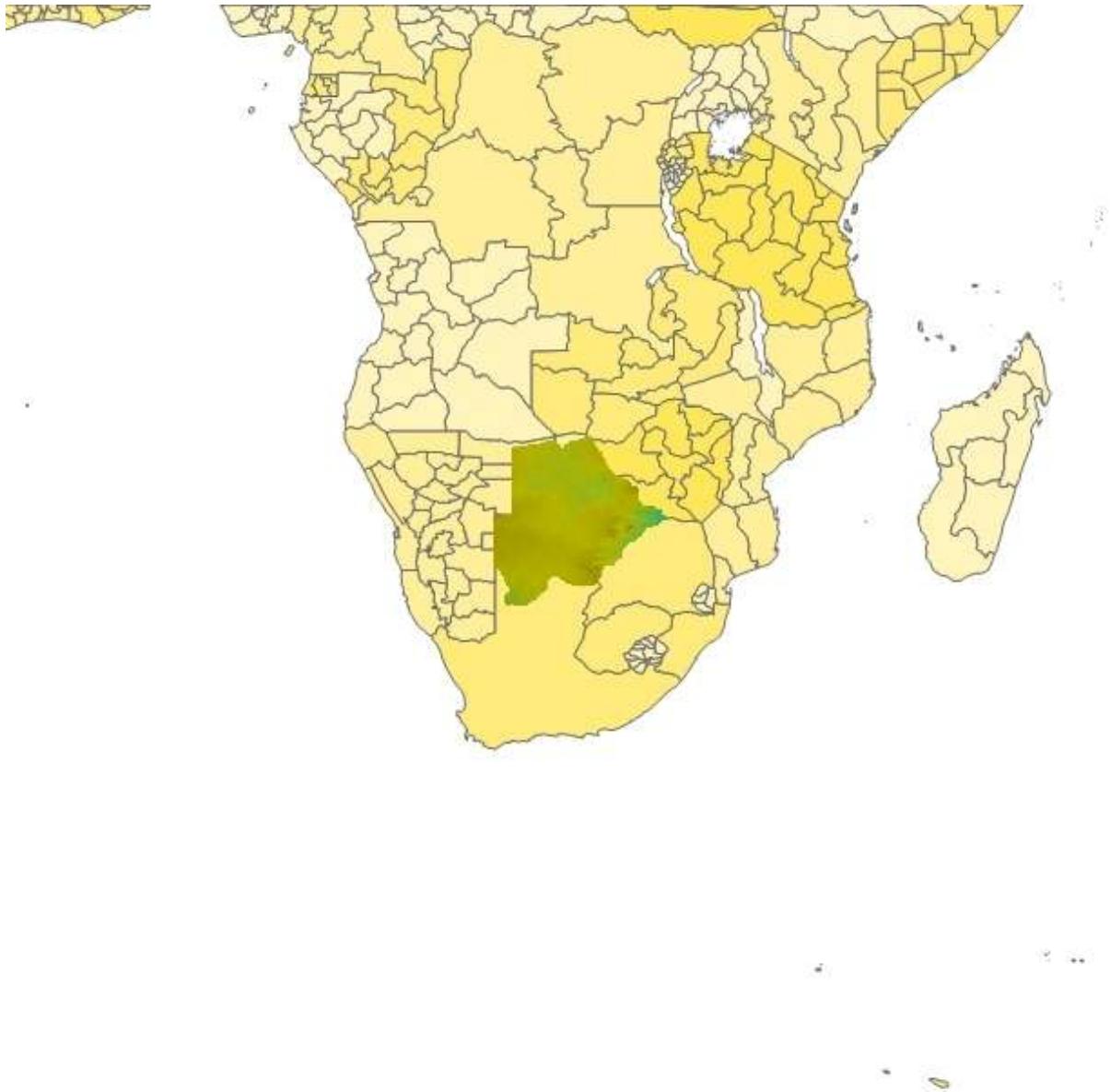
South Africa



South Africa



Botswana



Namibia

