

# Farm Strips South East



Ever thought about flying a microlight/ultralight, the freedom of flight, just jump into the aircraft and off we go. It's much cheaper to get your Microlight licence and you can buy a secondhand aircraft for as little as £1500. The one thing you will have to brush up on though is your cross country navigation as you won't be seeing many of those long Gray runways you are used to which you can normally see for miles, with these grass strips you will be surprised that you will find on many occasions that the field will simply disappear after take-off and you will find it very difficult to find again. Luckily for you I have placed a NDB (6 mile radius) on all my strips so even if the aircraft doesn't possess a ADF you can see them on your GPS. You may also be used to long runways you can land on easily, then these will be a real eye opener, a lot of the strips are quite short, maybe you have to approach over a high hill and drop down onto the field did I also mention you'll find the fields anything but smooth so make sure you turn off your 'Crash Detect'.

On many of the fields you will be able to re-fuel your aircraft as well simply look for the Petrol cans below and the 'F' on the field description. Remember to set your 'Mesh Terrain' to 10Mtrs.

## Fuel Available



**There are a great variety of microlights both payware and freebies suitable for these fields, firstly you have the default FSX microlight, I have also included a model of the CFM Streak Shadow, one of the safest microlights also offers a good turn of speed as well as a good range and a fantastic stopping distance.**

**Another excellent free aircraft is the Mitchell Wing by Dave Rowbery and available from the Aerosoft website.**



**Aerosoft free    Mitchell Wing**



**Altramax2 available free at [simviation.com](http://simviation.com)**

# **Ashley's Field, Lincolnshire (F) Alt; 5Ft**



**Runways Grass 18/36 460m 06/24 320m**

**Long smooth runway on 18/36, 06/24 is for the more experienced.**

**NDB 200.1**

# Ashley's Field from the air





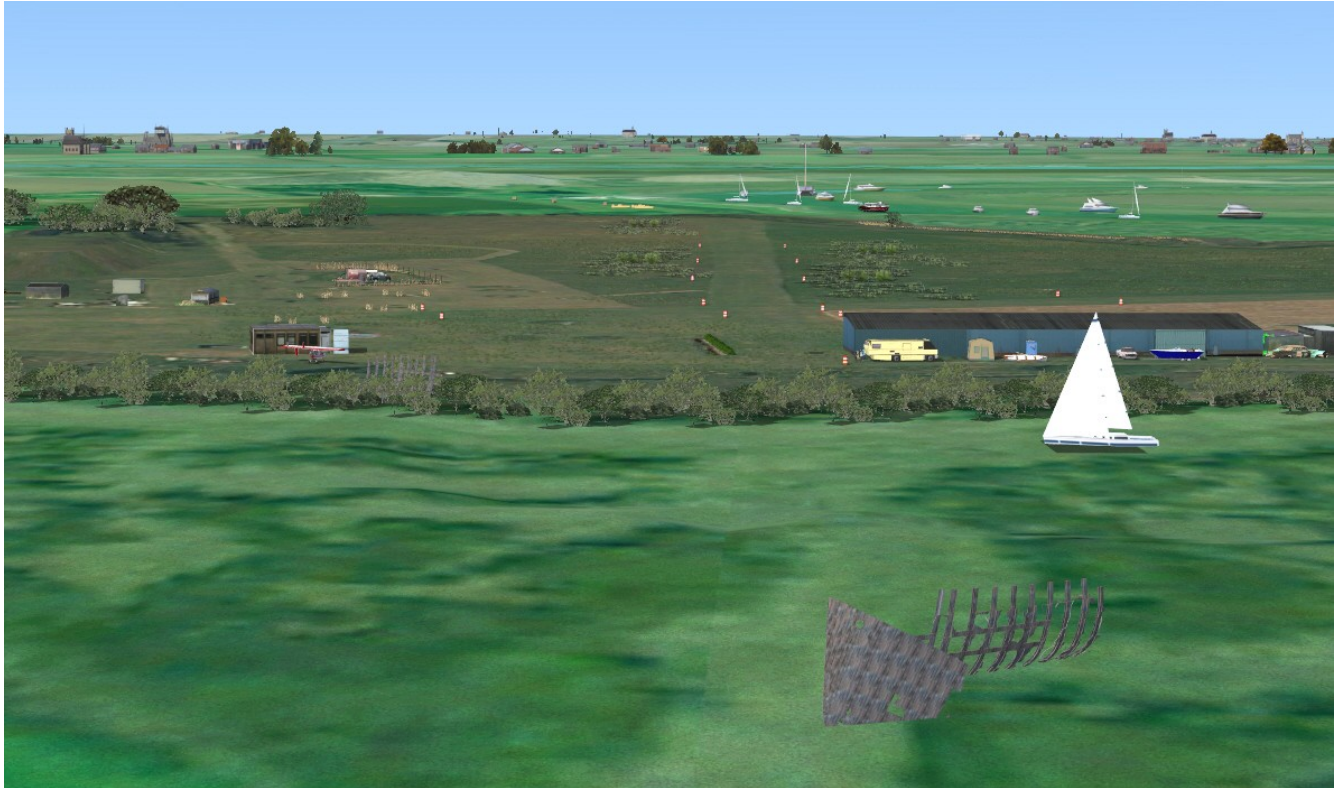
# **Barling Airfield. Essex Alt. 8Ft.**



**36/18 460Mtrs 07/25 300Mtrs. Grass**

**NDB -200.6 Situated 3Nm N/E of Southend**

# Barling from the Airfield





**Brooklands Farm, Cambridgeshire. Alt. 50Ft.**



**15/33 270Mtrs Grass**

**NDB. 200.6**

## Brooklands Farm from the air





# **Cottered Airfield, Hertfordshire (F)**

## **Alt; 380Ft**



**07/25 500m Grass, long and smooth, not easy to spot**  
**NDB 200.8**

# Cottered from the air



# **Cromer (Northrepps) , Norfolk (F)**

## **Alt; 196Ft**



**04/22 660Mtrs Grass, 15/33 380Mtrs, Grass  
NDB 200.3, nice smooth strips.**



# Cromer from the air



**Cuckoo Tye Farm (F), Suffolk.**  
**Alt; 224Ft.**



**09/27 630Mtrs Grass, Long and smooth**  
**NDB 200.4**

# Cuckoo-Tye from the air





## **Deal, Kent. Alt; 98Ft**



**04/26 330Mtrs Grass. Nice and smooth with a notable downslope on 26. Care needed when landing on 26.**

**NDB 200.70**

# Deal from the air



## **Deanland, Sussex. (F) Alt; 64Ft.**



**06/24 400Mtrs, Grass, Very active airfield. Slightly undulating runway.**

**NDB 200.4**



# Deanland from the air



## **Eastchurch, Kent. (F) Alt; 80Ft.**



**08/26 740Mtrs. A long undulating runway situated on the Isle of Sheppey just on the mouth of the River Thames. Be wary of potholes off the runway. Again not easy to find.  
NDB 201.00**

# Eastchurch from the air





## **Farthing Corner, Kent (F) Alt; 422Ft.**



**06/24 550Mtrs . Long smooth grass runway. Taxi up to the doors  
with fuel written on them to fill up.  
NDB 200.6**

# Farthing Corner from the air



## **Frinstead, Kent (F) Alt; 517Ft.**



**30/21 680Mtrs 08/260 400Mtrs**

**Long smooth grass runways**

**NDB 200.6**



# Frinstead from the air

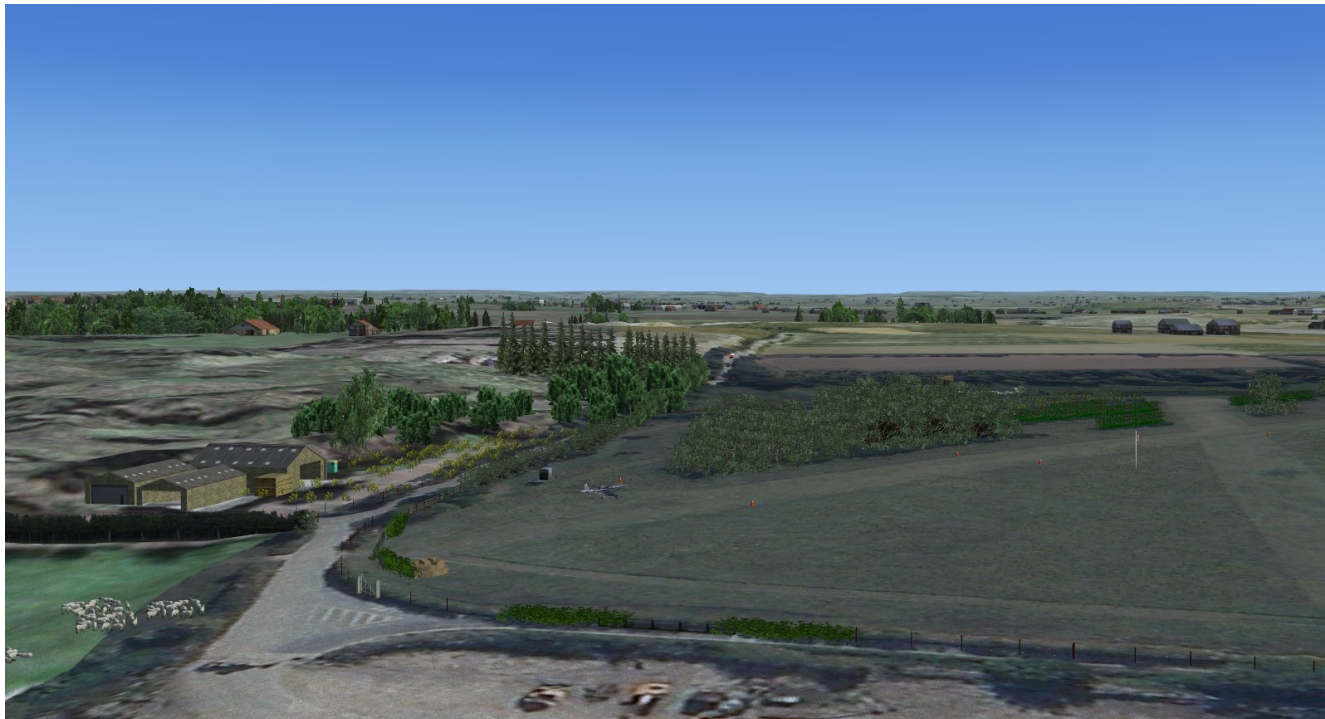


## **Gerpin's Farm , Essex (F) Alt; 30Ft.**



**02/20 350Mtrs 06/24 360Mtrs , Sloping slightly  
NDB 200.6**

# Gerpins Farm from the air





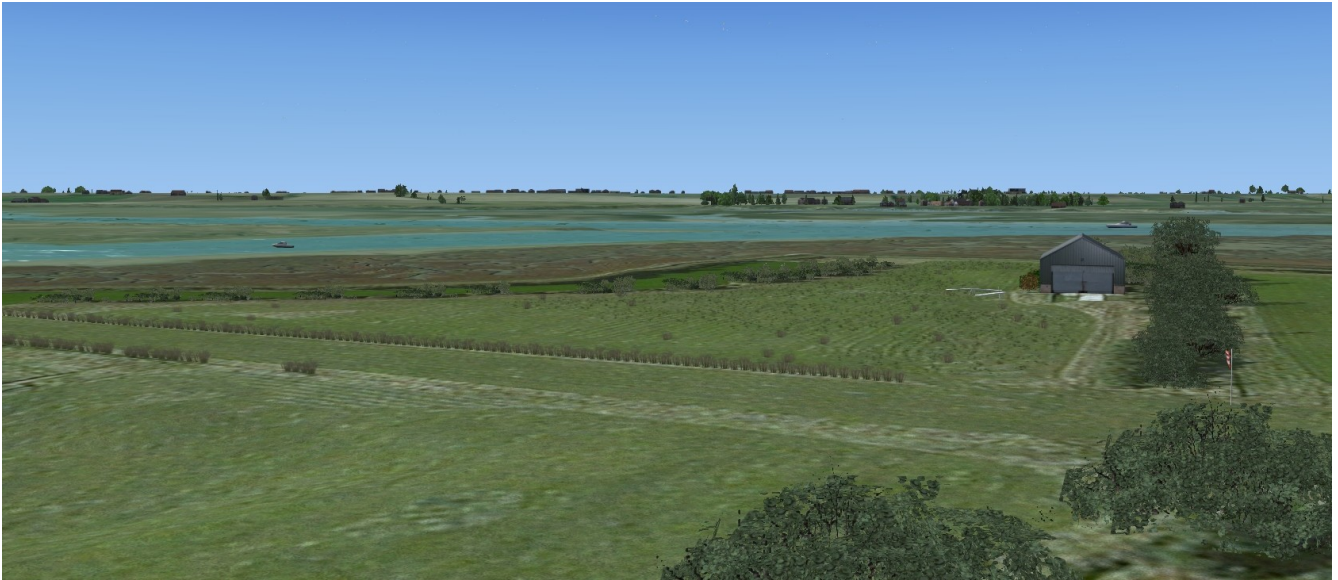
## **Horsey Island (F) Alt. 17ft**



**08/26 460Mtrs Great field to fly into situated on Horsey Island,  
keep an eye out for the seagulls.**

**NDB 200.2**

# Horsey Island from the aircraft





# **Kingfishers Bridge, Cambridgeshire.**

## **Alt. 9Ft**



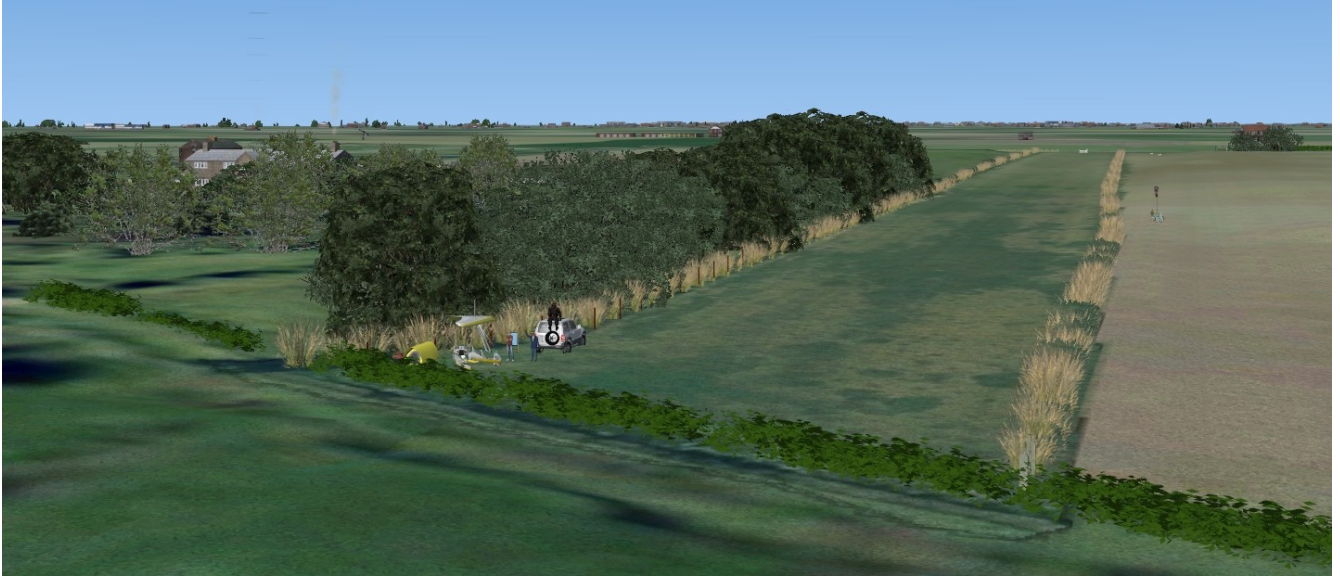
**09/7 570Mtrs. Grass**

**Situated 4Nm South of the city of Ely and 8Nm West of the airforce base at Mildenhall. Not an easy field to find but at least it's long and smooth.**

**NDB. 200.8**



# Kingfishers Bridge from the air



# **L.E.C. Airfield Bognor, East Sussex.**

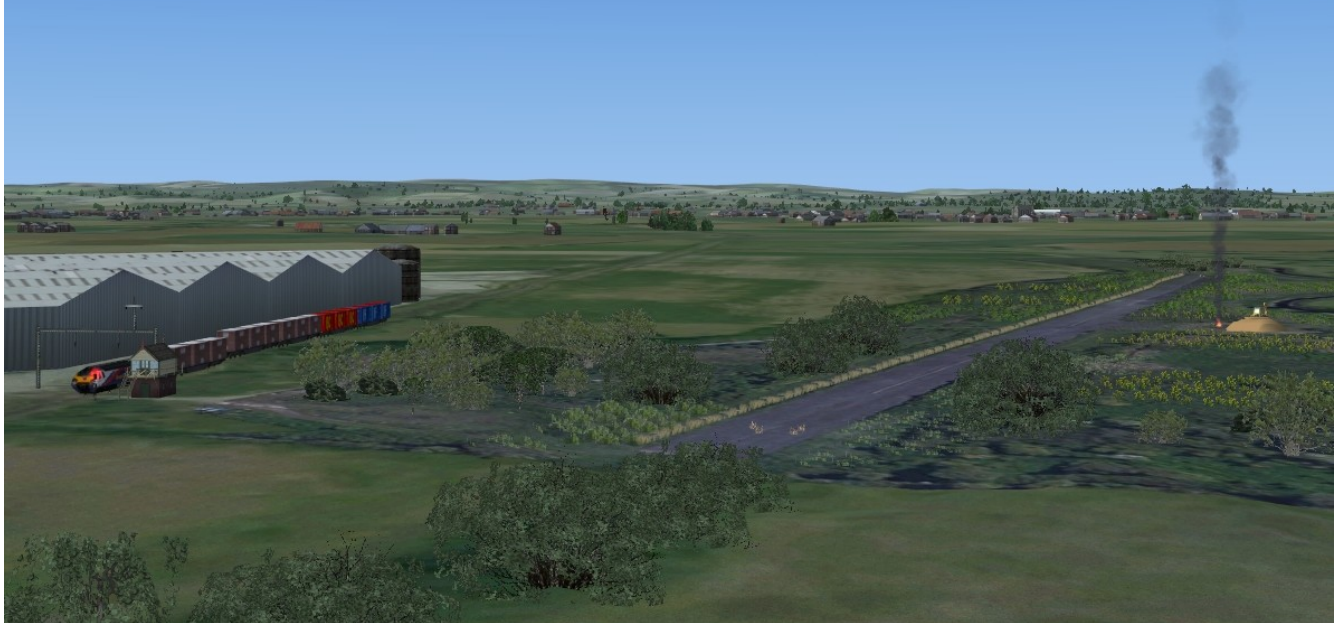
## **Alt; 3Ft**

**Although this airfield is now disused we in the simulator world can still use it.**



**O4/22 600m Asphalt bumpy but still usable. Easy to find it's next to the main railway line into Bognor next to a large white building**  
**NDB 202.00**

# **L.E.C. Bognor from the air**





## **Low Farm, Norfolk    Alt. 6Ft**



**06/25 270Mtrs. A very short strip suitable for microlights only  
NDB. 200.6**

# Low Farm from the air





# **Marshland, Cambridgeshire. Alt.2ft. (F)**



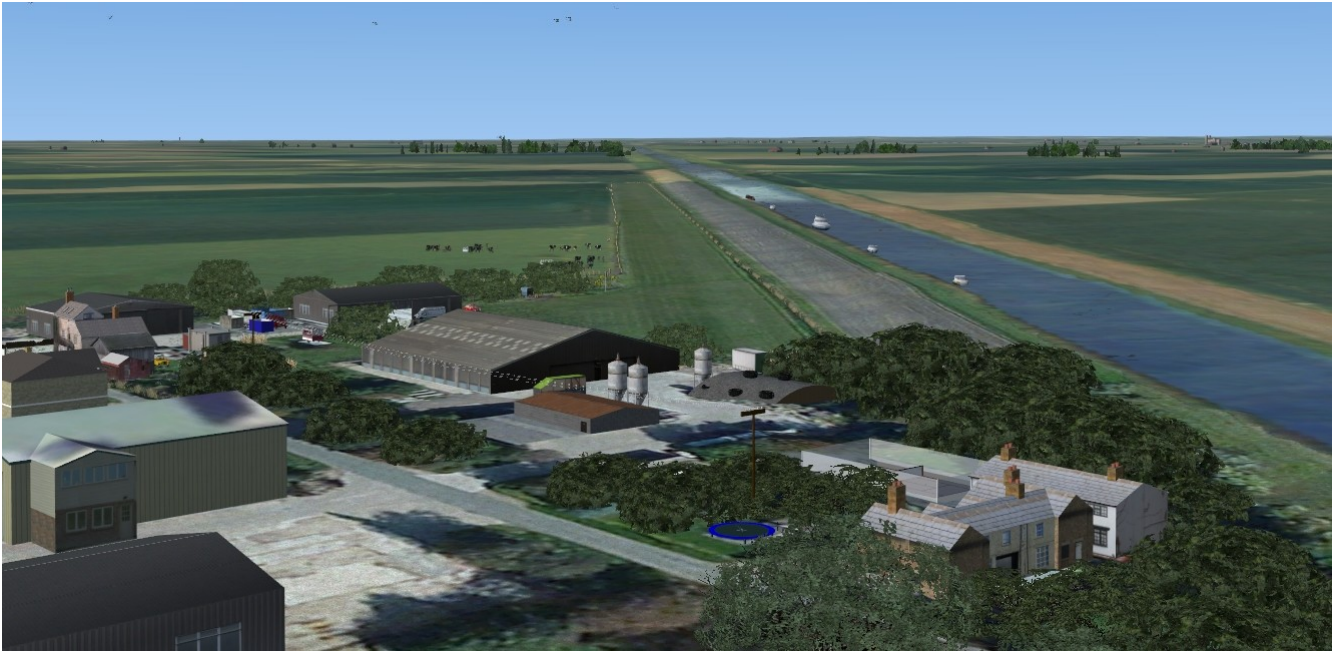
**03/21 800mMtrs.**

**A very long smooth grass runway situated next to the long  
-Middle Level Drain ending at King's Lynn, so it's relatively easy  
to find.**

**NDB. 200.6**



# Marshland from the air



# **Maypole Farm, Kent. Alt.118Ft.**



**02/20 680Mtrs Grass. Long smooth sloping down to the South  
Footpath crosses runway beware of traffic and pedestrians  
NDB 200.9**

# Maypole from the air





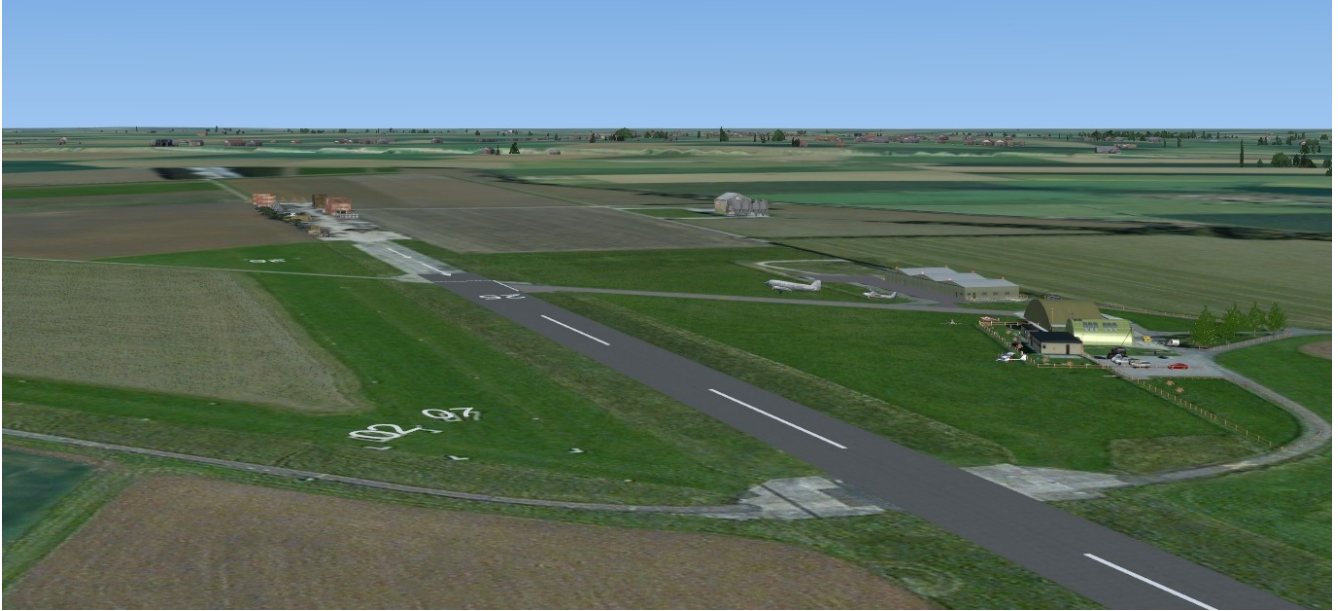
# **Old Buckenham, Norfolk. Alt. 192Ft**



**07/25 Hard 640-Mtrs 07/25 Grass 450Mtrs 02/02 Grass 360Mtrs  
NDB 200.1**

**Wartime home of the USAAF 453<sup>rd</sup> Bomb Group**

# Old Buckenham from the air





# **Old Hay, Kent. Alt 50Ft**



**09/27 620Mtrs 11/29 410Mtrs. 02/20 use on in emergency as it's quite rough. Situated next to the main railway line.**

**NDB 200.5**



# Old Hay from the air



# **Orchard House, Norfolk. Alt. 3Ft**



**07/25 440mMtrs Grass. Long and flat no known problems.**

**NDB. 200.3**

# Orchard House from the air





# **Pent Farm, Kent Alt.240ft**

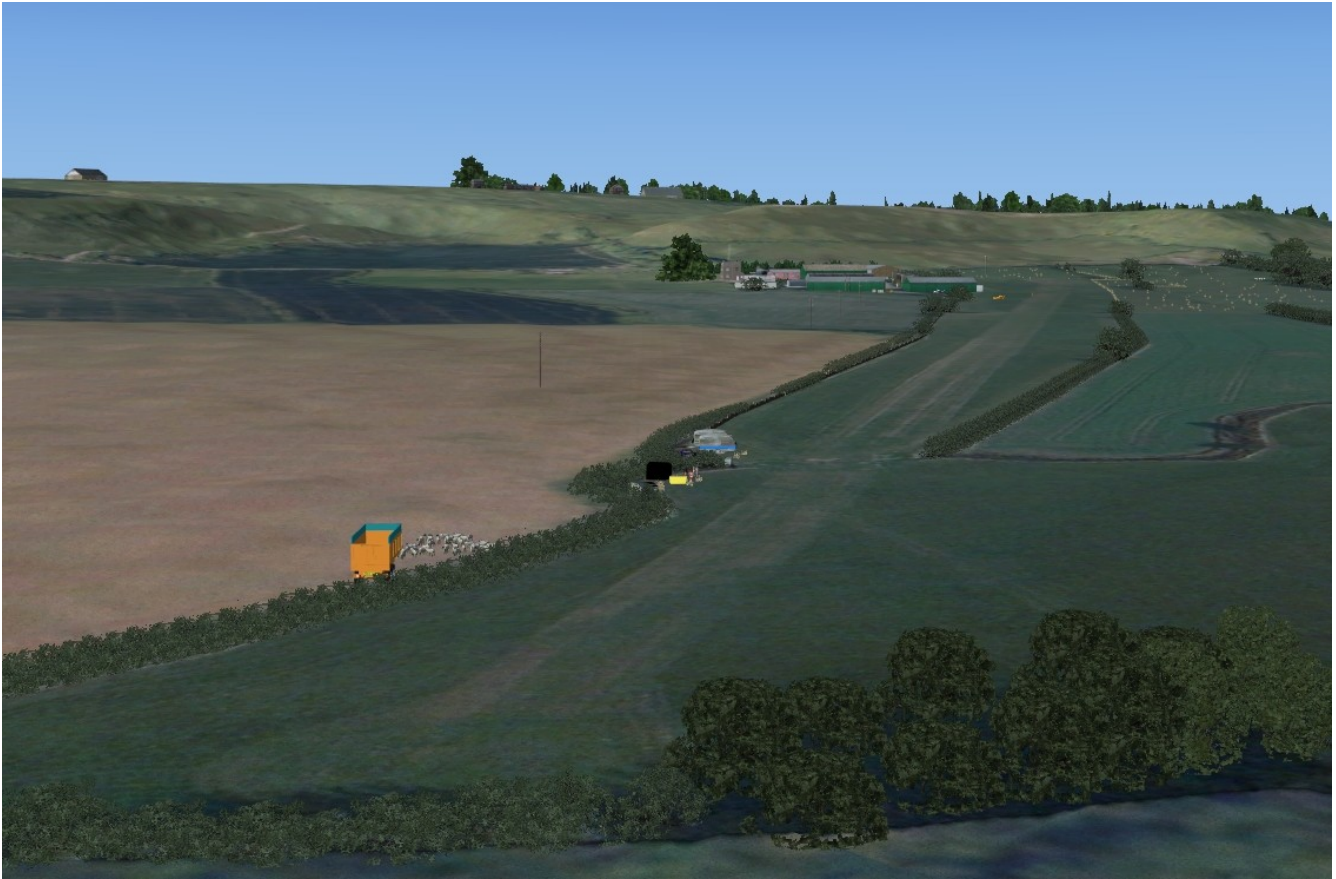


**01/19 , 860Mtrs Grass. 170Mtr extension available.**

**To the North-West of Folkstone, right next to the Channel Tunnel. Care needed when landing on 19 as there is a high hill on approach. Field slopes down to the South.**

**NDB. 200.1**

# Pent Farm from the air





## **Truleigh Farm, West Sussex. (F) Alt. 50ft.**



**01/28 430Mtrs. Beware of turbulence from the trees.  
Long smooth runway**

**NDB. 203.00**



# Truleigh Farm From the Air.

